

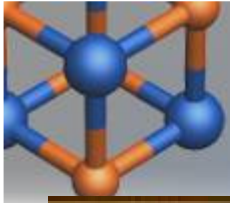
# Miniplant

d|b|t|a

Fachgebiet  
Dynamik und Betrieb technischer Anlagen



## Detailansichten

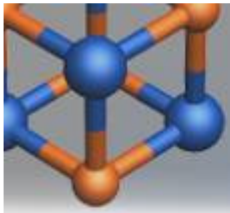


# Miniplant

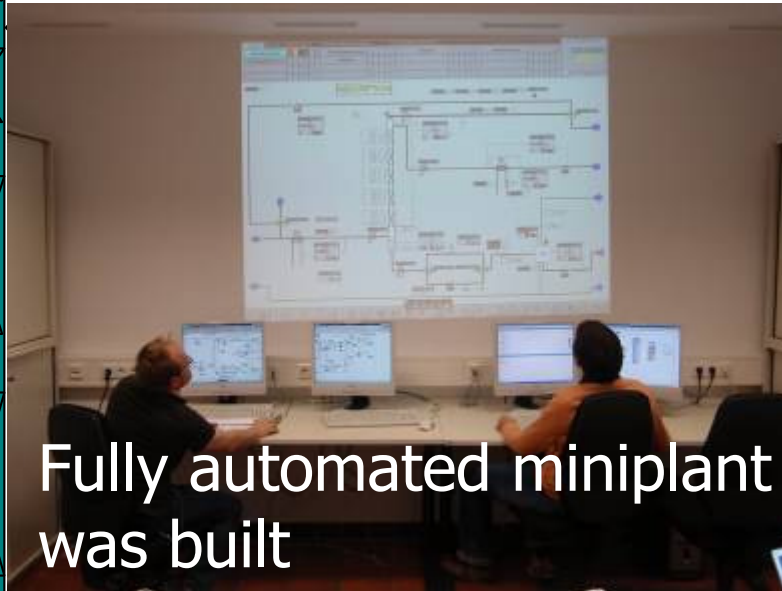
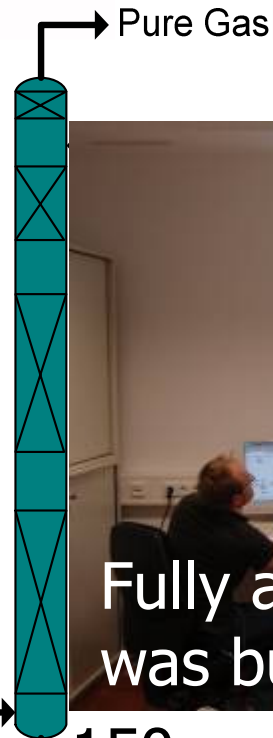
d|b|t|a

Fachgebiet  
Dynamik und Betrieb technischer Anlagen



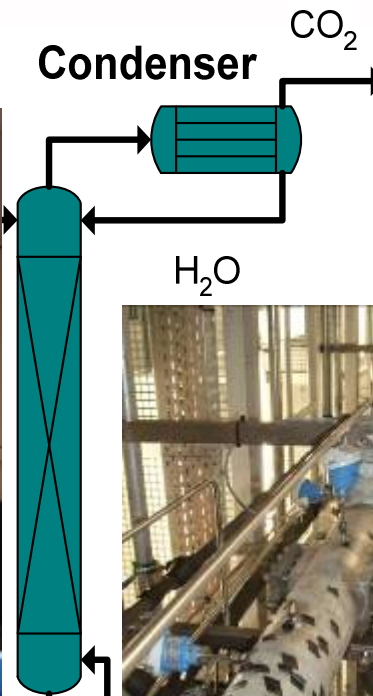


# Miniplant

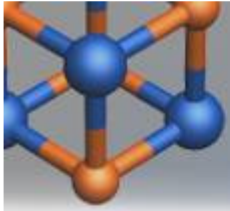


Fully automated miniplant was built

150 sensors and actors,  
22 closed loops



Column

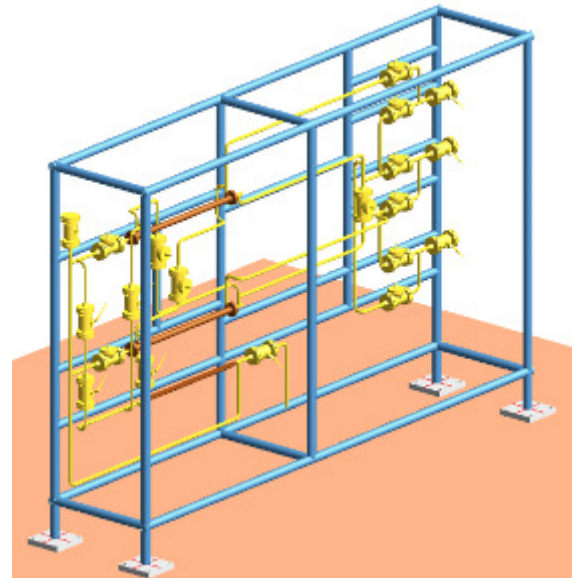


Planning

Fluidized bed reactor

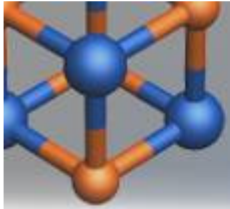


Membranreaktor



Realized Downstreaming





# Acknowledgment

d|b|t|a

Fachgebiet  
Dynamik und Betrieb technischer Anlagen

- ▶ Thanks for the Support of the Cluster of Excellence and the financial support of the DFG.

Thanks to  
our  
technical  
staff



Endress+Hauser 

SCHMIDT + HAENSCH


KÜHNI



 **BASF**  
The Chemical Company

 **dosch**  
messapparate

**SIEMENS**

Uhde 

 unicat